



EMPHNET

The Eastern Mediterranean
Public Health Network

EMPHNET FRAMEWORK FOR STRENGTHENING PHC FOR ACHIEVING UHC



WHY WAS THE EMPHNET FRAMEWORK FOR STRENGTHENING PHC FOR ACHIEVING UHC?

Innovative strategies are essential to meet the healthcare needs of diverse populations, including vulnerable groups, while minimizing inefficiencies in healthcare costs borne by governments. Maintaining the status quo in current health services will neither address the rapidly changing environment and emerging challenges nor achieve UHC targets. Without adopting new approaches, primary health services risk becoming increasingly irrelevant and incapable of meeting growing health demands.

WHAT IS THE EMPHNET FRAMEWORK FOR STRENGTHENING PHC FOR ACHIEVING UHC?

EMPHNET's Framework for Strengthening PHC, grounded in the Family Health Team (FHT) approach and the integration of essential public health functions into PHC, represents a critical step toward improving access to quality services and reducing out-of-pocket expenditures.

WHAT ARE THE BENEFITS OF THE FHTS FOR PHC?

The primary investment outcome of the FHT approach is enhancing access to and utilization of a comprehensive package of PHC services while improving the quality and efficiency of care. This team-based model has demonstrated numerous advantages, including:



Reducing healthcare costs by decreasing hospitalizations and emergency visits [5,6].



Increasing provider job satisfaction by fostering a collaborative work environment.



Meeting patient needs and improving satisfaction with care [7].



Optimizing resource utilization within the healthcare system.



Reducing health inequalities by addressing social determinants of health [9,10].



Enhancing health outcomes such as quality of life and continuity of care [8].



Improving accessibility to services, particularly in underserved areas [11].

WHAT ARE THE BENEFITS OF INTEGRATING ESSENTIAL PUBLIC HEALTH FUNCTIONS INTO THE FHT APPROACH WITHIN PHC?

The integration of essential public health functions within PHC enhances health system performance and accelerates progress toward UHC. These functions can be implemented by public health officers embedded in FHTs or other trained professionals, including community health workers



Reducing healthcare costs by decreasing hospitalizations and emergency visits [5,6].



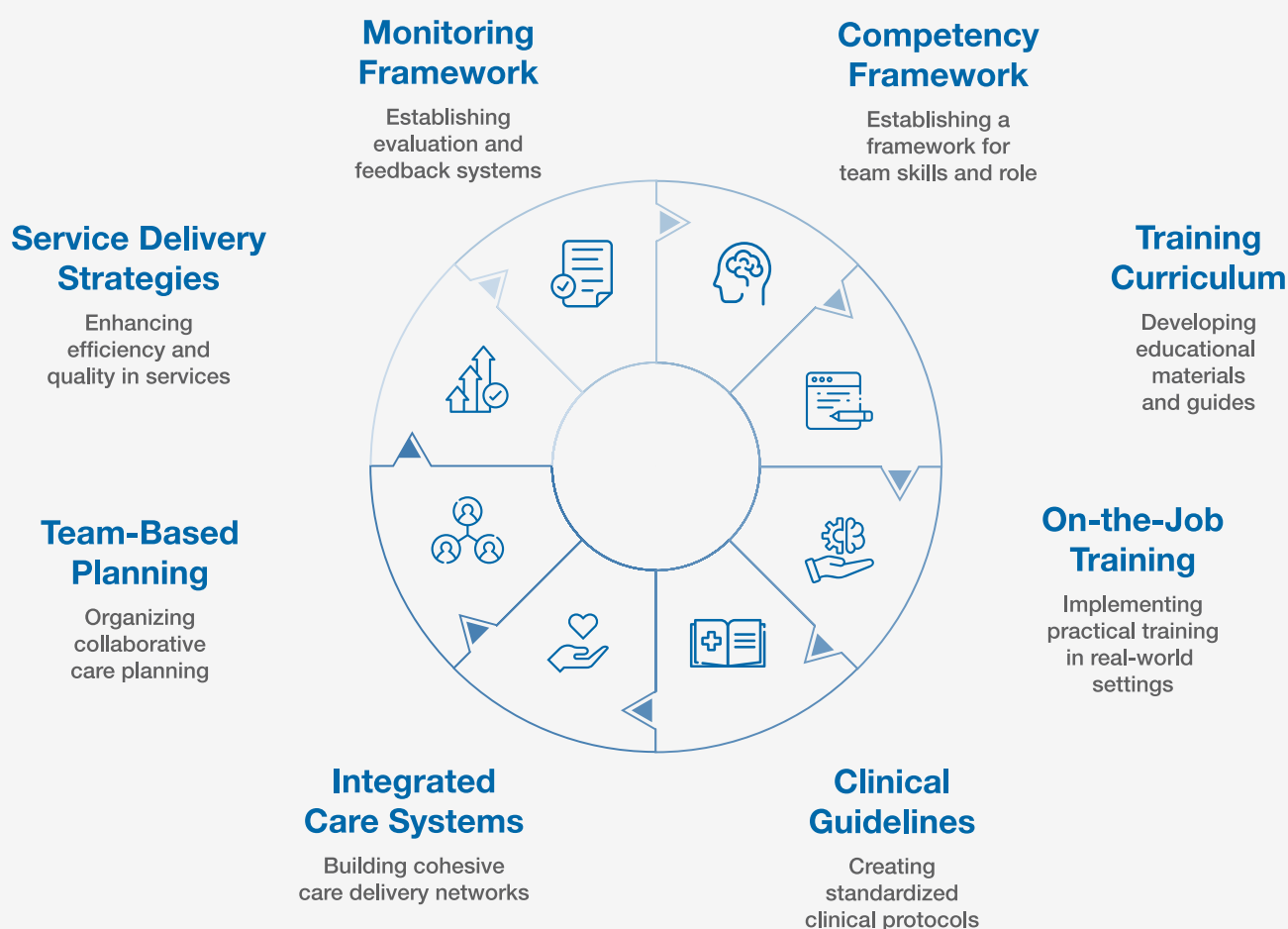
Enhancing health outcomes such as quality of life and continuity of care [8].



Meeting patient needs and improving satisfaction with care [7].



Increasing provider job satisfaction by fostering a collaborative work environment.



EMPHNET Framework for Strengthening PHC for Achieving UHC

HAS THE EMPHNET FRAMEWORK FOR STRENGTHENING PRIMARY HEALTH CARE TO ACHIEVE UNIVERSAL HEALTH COVERAGE BEEN IMPLEMENTED IN PRACTICE?

Yes. EMPHNET is working closely with Jordan's Ministry of Health to co-design and implement the FHT-based Framework, ensuring it aligns with national priorities and local needs, with a focus on greater integration of essential public health functions within PHC. This collaboration supports building practical, sustainable Family Health Teams that strengthen service delivery, expand public health impact, and advance Universal Health Coverage goals.

As part of the preparation for the co-design and implementation of the FHT-based Framework, EMPHNET supported the Ministry in Conduct a comprehensive assessment to identify the gaps, opportunities, and synergies with ongoing programs and plans for expanding Family Health Teams (FHTs), with a focus on human resources, skills, and training needed to develop an enhanced and more comprehensive FHT approach.



From the meeting of the technical committee responsible for proposing an FHT model (Jordan 2022)

HOW IS THE EMPHNET PROFESSIONAL DIPLOMA IN INTEGRATED PRIMARY HEALTH CARE RELATED TO THE FRAMEWORK?

As part of operationalizing EMPHNET Framework for Strengthening PHC for Achieving UHC, EMPHNET, through its educational arm, the International Academy of Public Health (IAPH), is offering a Professional Diploma in Integrated Primary Health Care. This 6-month blended program equips frontline PHC providers with the essential clinical, public health, and leadership competencies needed to put the Family Health Team (FHT) model into practice. The program targets a wide range of PHC providers, including physicians, nurses, midwives, public health professionals, pharmacists, social workers, psychologists, and community health workers.



Primary Care Physicians
(General Practitioners
and Family Physicians)



Nurses



Midwives



Pharmacists



Public Health
Professionals



Psychologists, Social
Workers, Nutritionists,
and Others Offering
PHC-Level Services

The Integrated Primary Health Care Training Program is tailored for health professionals working in PHC Settings, particularly in the EMR

**Core
Competencies**



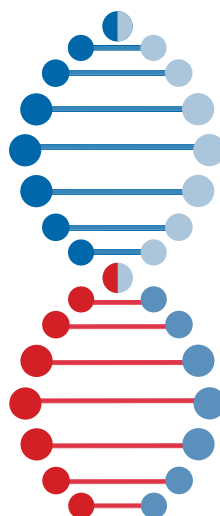
**Essential Public
Health Functions**



**Specialized Clinical
Competencies**



**Family Health
Team Approach**



Competencies of the Professional Diploma Program in Integrated Primary Health Care

THE DIPLOMA'S STRUCTURE

The diploma is offered in a blended format to provide flexible, practical, and sustainable learning that allows health workers to balance training with their jobs while applying new skills directly in their work settings. The program will employ blended learning methods, including:

Interactive Online Modules

Core theoretical concepts delivered through videos, readings, and interactive exercises.

In-person Workshops

To deliver real-world scenarios and case-studies focusing on clinical skills, team-based care, and leadership to develop problem-solving and decision-making skills in PHC practice.

Field Projects

Participants will undertake a capstone project addressing a key PHC challenge in their context, such as improving a specific health service or integrating a public health intervention.

THE DIPLOMA'S LEARNING OUTCOMES

By the end of the program, graduates will be competent to Provide comprehensive, patient-centered care that incorporates preventive, promotive, curative, and rehabilitative services tailored to individual and community health needs.

DISEASE PREVENTION

- Integrate essential public health functions into everyday practice (health promotion, prevention, surveillance).
- Implement evidence-based measures to reduce the incidence of key conditions.
- Address social determinants of health to promote health equity and better outcomes.
- Provide strong consultation, counseling, and health management guidance.
- Communicate effectively and empathetically with patients and families.

DISEASE MANAGEMENT

- Take focused medical and social histories and perform accurate physical exams.
- Order and interpret common diagnostic tests appropriately.
- Develop and implement effective treatment plans for primary care conditions.
- Apply evidence-based practices to deliver high-quality care across the lifespan.
- Make sound, timely clinical decisions, analyzing and synthesizing information as needed.

Graduates will also gain the skills needed to collaborate effectively within multidisciplinary family health teams to meet diverse community health needs, and to lead and participate in quality improvement initiatives that strengthen primary health care.

Learn more about
the diploma

